

INDEX

SHEET NO.	SUBJECT
1	Flagger Operation for Two Lane Roads, Index and General Notes
2	Flagger Operation for Multiple Work Areas with Posted Speed $\geq$ 50 mph
3	Flagger Operation for Urban Two Lane Roads with Posted Speed < 50 mph (Single Work Area)
4	Flagger Operation on Horizontal Curves (Single Work Area)
5	Maintenance of Traffic for Mobile Operation with Flaggers for Two Lane Roads
6	Flagger Operation for Temporary Traffic Stoppage for Two Lane Roads

GENERAL NOTES:

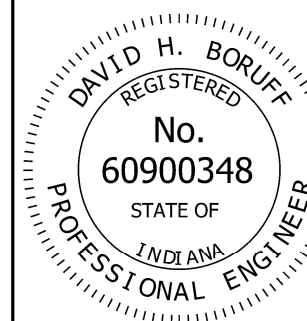
1. Unless otherwise noted, the spacing of channelizing devices in tangent sections shall be 100 ft where the posted speed limit is 50 mph or greater, and the spacing shall be 50 ft where the posted speed limit is less than or equal to 45 mph.
2. For temporary lane closures during daylight hours, cones or tubular markers may be used in lieu of drums.
3. Temporary pavement markings shall not be required for temporary daylight lane closures
4. Channelizing devices as shown are schematic, the number of channelizing devices will vary based on field conditions.
5. The posted speed limit is the permanent posted speed limit prior to road construction.

INDIANA DEPARTMENT OF TRANSPORTATION

FLAGGER OPERATION FOR TWO LANE ROADS,  
INDEX AND GENERAL NOTES

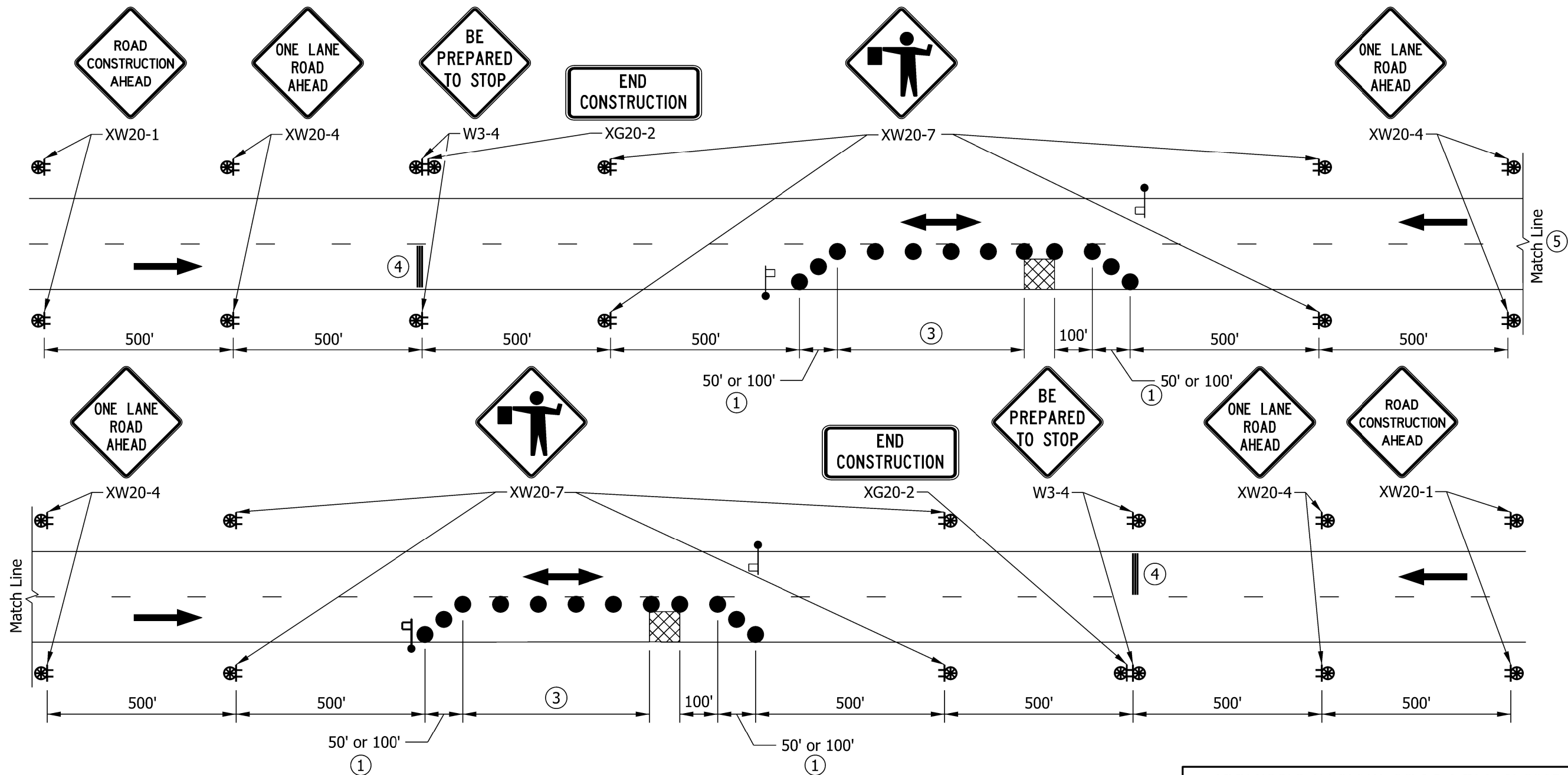
SEPTEMBER 2022

STANDARD DRAWING NO. E 801-TCFO-01



 05/17/22  
DESIGN STANDARDS ENGINEER DATE

 06/27/2022  
CHIEF ENGINEER DATE



**NOTES:**

- ① Spacing of channelizing devices at this location shall be 10 ft for a 50 ft taper or 20 ft for a 100 ft taper.
- 2. If Automated Flagger Assistance Devices are used, see Part 6 of the MUTCD for set-up requirements.
- ③ Longitudinal Buffer Length
- ④ Portable rumble strip installation, if required.
- ⑤ Work areas more than 1 mile apart shall include XW20-1 signs 500 ft in advance of XW20-4 signs, and W3-4 signs 500 ft after the XW20-4 signs.

LONGITUDINAL BUFFER LENGTH	
Posted Speed Limit (mph)	Length (ft)
50	425
55	495

**LEGEND**

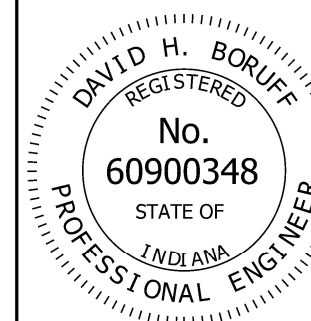
- Flagger
- Work Area
- Channelizing Device
- Construction Sign and Supports
- Construction Warning Light, Type A
- Direction of Traffic

INDIANA DEPARTMENT OF TRANSPORTATION

FLAGGER OPERATION FOR MULTIPLE WORK AREAS WITH POSTED SPEED ≥ 50 MPH

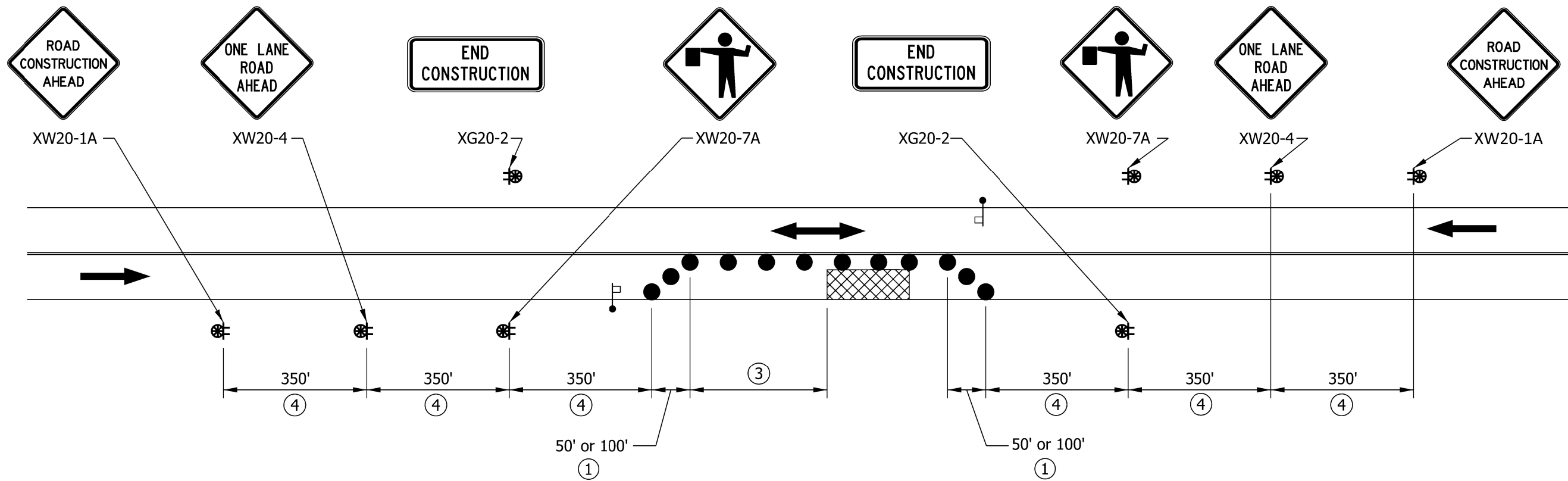
SEPTEMBER 2022

STANDARD DRAWING NO. E 801-TCFO-02



*David H. Boruff* 05/17/22  
 DESIGN STANDARDS ENGINEER DATE

*[Signature]* 06/27/2022  
 CHIEF ENGINEER DATE



**NOTES:**

- ① Spacing of channelizing devices at this location shall be 10 ft for a 50 ft taper or 20 ft for a 100 ft taper.
- 2. If Automated Flagger Assistance Devices are used, see Part 6 of the MUTCD for set-up requirements.
- ③ Longitudinal Buffer Length
- ④ Sign spacing may be 100 ft for posted speed limits  $\leq 35$  mph.

LONGITUDINAL BUFFER LENGTH	
Posted Speed Limit (mph)	Length (ft)
$\leq 30$	200
35	250
40	305
45	360

**LEGEND**

- Flagger
- Work Area
- Channelizing Device
- Construction Sign and Supports
- Construction Warning Light, Type A
- Direction of Traffic

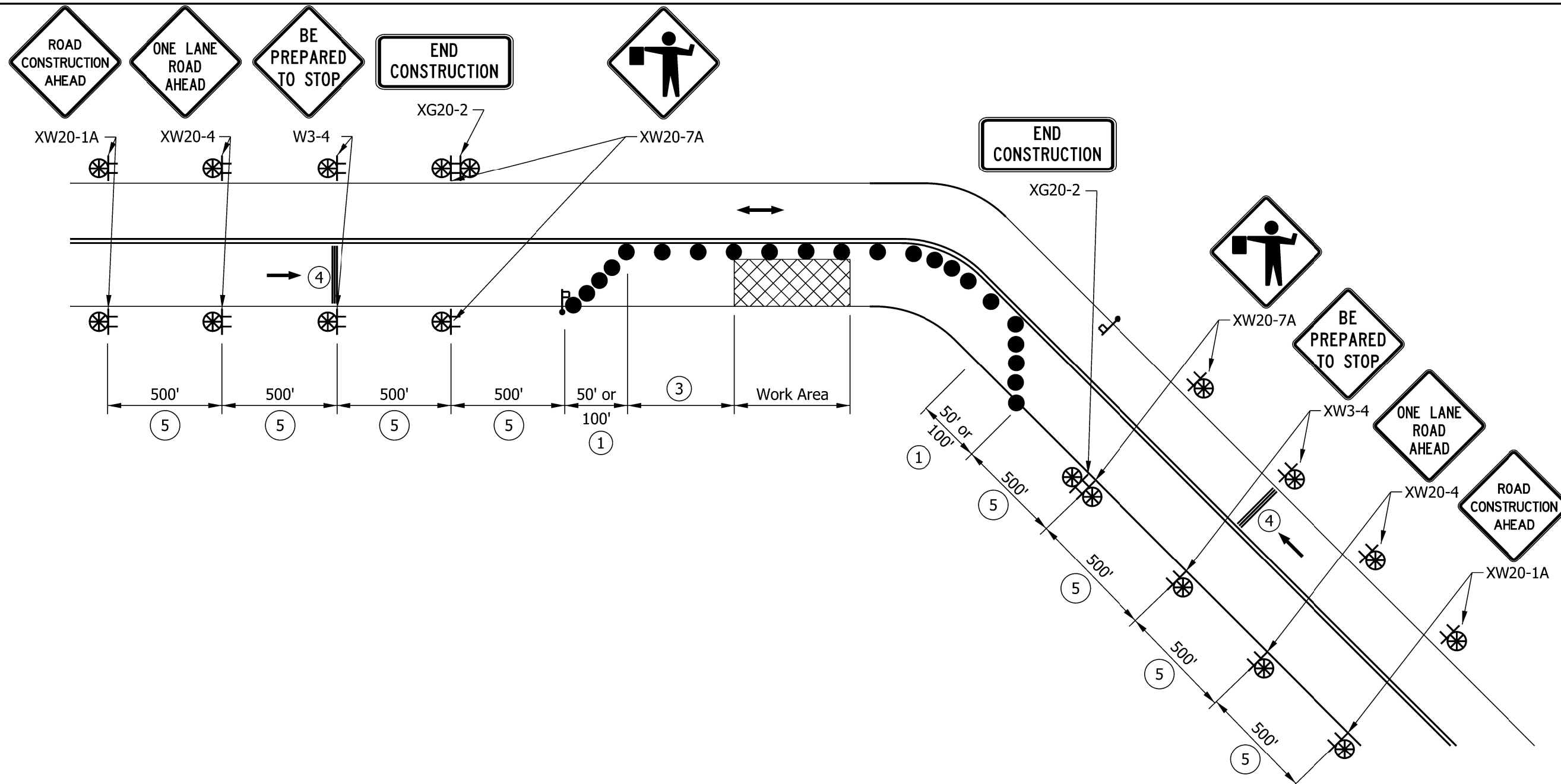
INDIANA DEPARTMENT OF TRANSPORTATION

FLAGGER OPERATION FOR URBAN TWO LANE ROADS WITH POSTED SPEED < 50 MPH SINGLE WORK AREA

SEPTEMBER 2022

STANDARD DRAWING NO. E 801-TCFO-03

	<p style="text-align: right;"><i>David H. Boruff</i> 05/17/22 DESIGN STANDARDS ENGINEER DATE</p> <p style="text-align: right;"><i>[Signature]</i> 06/27/2022 CHIEF ENGINEER DATE</p>
--	--



**NOTES:**

- ① Spacing of channelizing devices at this location shall be 10 ft for a 50 ft taper or 20 ft for a 100 ft taper.
- 2. If Automated Flagger Assistance Devices are used, see Part 6 of the MUTCD for set-up requirements.
- ③ Longitudinal Buffer Length
- ④ Portable rumble strip installation, if required.
- ⑤ Sign spacing may be 350 ft for posted speed limits of 40 mph or 45 mph and 100 ft for posted speed limits  $\leq$  35 mph.
- 6. For posted speed limits < 50 mph, all construction signs may be mounted on just the right side of the roadway.

LONGITUDINAL BUFFER LENGTH	
Posted Speed Limit (mph)	Length (ft)
$\leq 30$	200
35	250
40	305
45	360
50	425
55	495

**LEGEND**

- Flagger
- Work Area
- Channelizing Device
- Construction Sign and Supports
- Construction Warning Light, Type A
- Direction of Traffic

INDIANA DEPARTMENT OF TRANSPORTATION

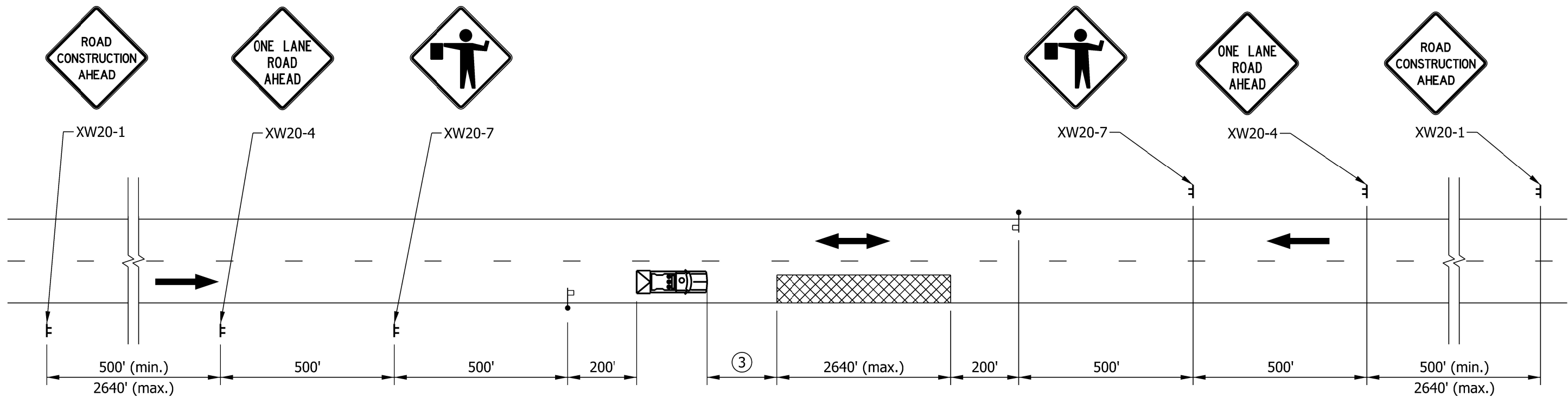
FLAGGER OPERATION FOR HORIZONTAL CURVES  
SINGLE WORK AREA

SEPTEMBER 2022

STANDARD DRAWING NO. E 801-TCFO-04

	<p style="text-align: right;"><i>David H. Boruff</i> 05/17/22 DESIGN STANDARDS ENGINEER DATE</p> <p style="text-align: right;"><i>[Signature]</i> 06/27/2022 CHIEF ENGINEER DATE</p>
--	--





FLASHING ARROW SIGN DETAIL

②

**NOTES:**

1. Additional signs may be required for the moving operations so as to maintain proper spacing.
- ② Flashing arrow sign shall be in caution mode.
- ③ Shadow vehicle roll ahead distance shall be as recommended by the truck mounted attenuator manufacturer.

**LEGEND**

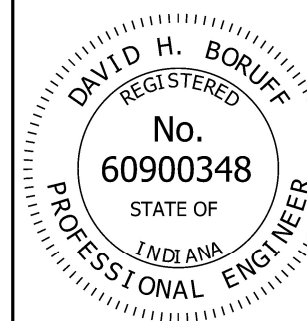
- Flagger
- Work Area
- Construction Sign and Supports
- Direction of Traffic
- Shadow vehicle with truck-mounted attenuator, type B flashing arrow sign, and strobe lights.

INDIANA DEPARTMENT OF TRANSPORTATION

MAINTENANCE OF TRAFFIC FOR  
MOBILE OPERATION WITH FLAGGERS  
FOR TWO LANE ROADS

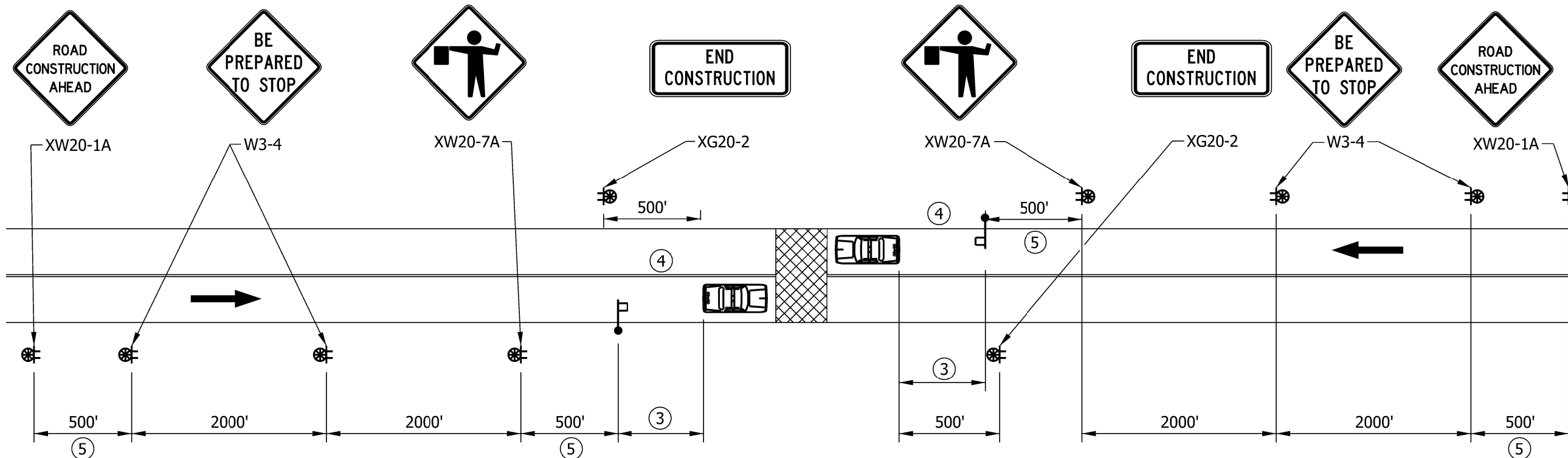
SEPTEMBER 2022

STANDARD DRAWING NO. E 801-TCFO-05



*David H. Boruff* 05/17/22  
DESIGN STANDARDS ENGINEER DATE

*[Signature]* 06/27/2022  
CHIEF ENGINEER DATE



**NOTES:**

1. Each temporary traffic stoppage shall be limited to 20 minutes.
2. If Automated Flagger Assistance Devices are used, see Part 6 of the MUTCD for set-up requirements.
- ③ Longitudinal Buffer Length.
- ④ Location for law enforcement vehicles, if present, to supplement flaggers.
- ⑤ In urban areas, the spacing may be reduced to 350 ft for posted speed limits > 30 mph and the spacing may be reduced to 100 ft for posted speed limits ≤ 30 mph.

LONGITUDINAL BUFFER LENGTH	
Posted Speed Limit (mph)	Length (ft)
≤30	200
35	250
40	305
45	360
50	425
55	495

**LEGEND**

- Flagger
- Work Area
- Police Car
- Construction Sign and Supports
- Construction Warning Light, Type A
- Direction of Traffic

**INDIANA DEPARTMENT OF TRANSPORTATION**

**FLAGGER OPERATION FOR  
TEMPORARY TRAFFIC STOPPAGE  
FOR TWO LANE ROADS**

**SEPTEMBER 2022**

---

**STANDARD DRAWING NO. E 801-TCFO-06**

DAVID H. BORUFF  
REGISTERED  
No. 60900348  
STATE OF INDIANA  
PROFESSIONAL ENGINEER

*David H. Boruff* 05/17/22  
DESIGN STANDARDS ENGINEER DATE

*[Signature]* 06/27/2022  
CHIEF ENGINEER DATE